

# Alaska Department of Fish and Game

Habitat Section  
Southeast Region



## 182-80-101000-2005 Tributary2

ADDITION

**Water body name:**

**Quad:** Yakutat C-5

**Upper Reach Latitude:** 59.478176 **Longitude:** -139.650921

**Lower Reach Latitude:** 59.481605 **Longitude:** -139.649051

**Findings:** We surveyed this uncataloged stream from the road using baited minnow traps and GPS and captured juvenile coho salmon (Figure 1). The stream is slow moving through a ditched channel alongside the road and ends at waypoint 1344 (Table 1; Figures 2, 3).

**Recommendations:** Add this uncataloged stream to the anadromous waters catalog for rearing coho salmon (Figure 4).

**Nomination:** Pending

**Survey date:** 9/18/2024

**Species & Lifestage:** CO

**Survey crew:** CD, FC

Table 1.–182-80-10100-2005 Tributary 2 survey data.

Waypoint	Latitude	Longitude	Notes	Stream Width ft	Stream Substrate	Habitat Features	Gradient %	Sample Effort	Sample Results
1344	59.478182	-139.650945	Upper extent of ditched stream feeding into the Tawah.	10-12	Fine Organic		0-1	MT	10 CO 1 SB



Figure 1.–Juvenile coho salmon captured at waypoint 1344.



Figure 2.—Ponded area at upper extent of the stream.



Figure 3.—Ponded area at upper extent where minnow trap was set.

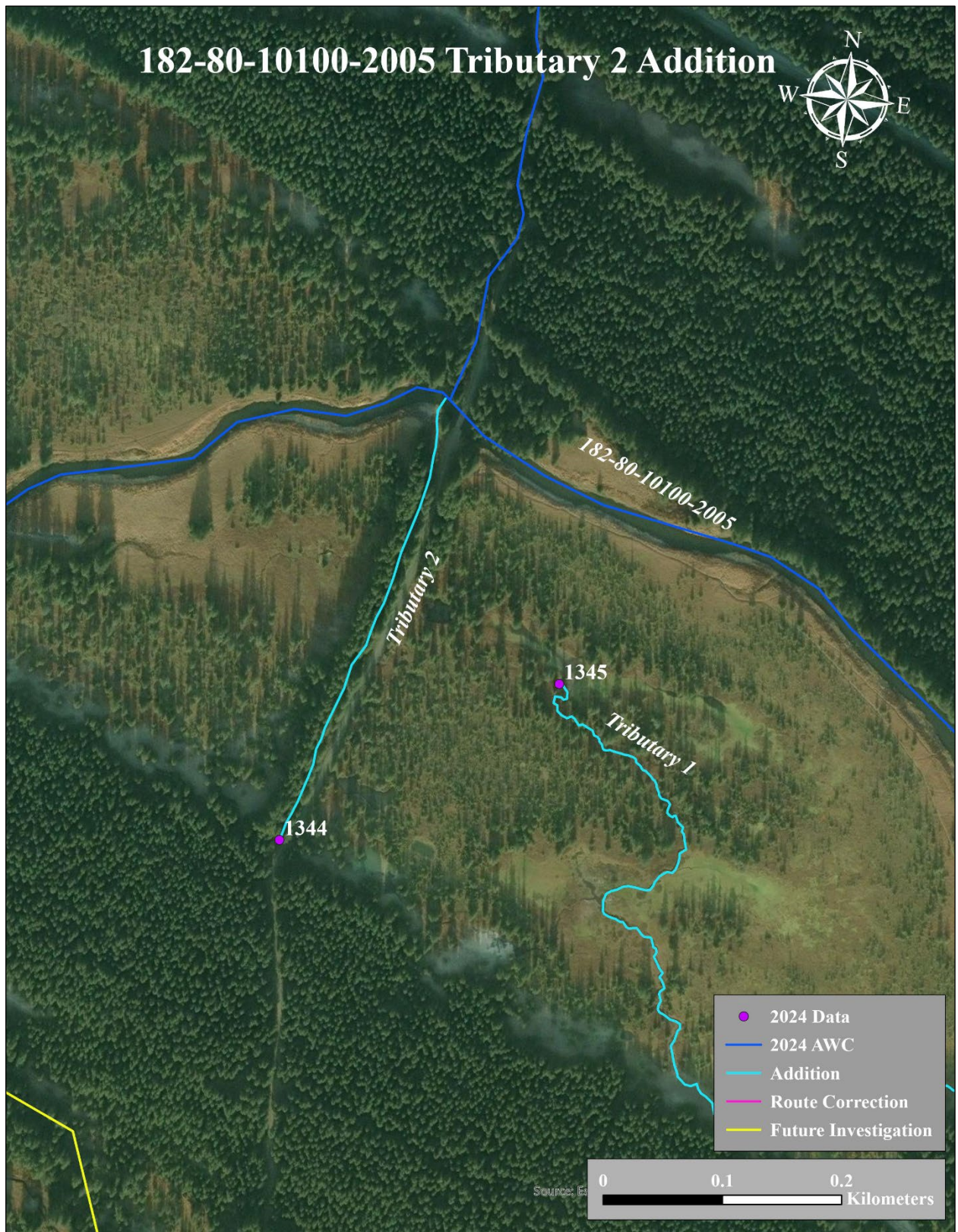


Figure 4.–182-80-10100-2005 tributary 2 addition map.